



[Home](#)

IDENTIFICATION

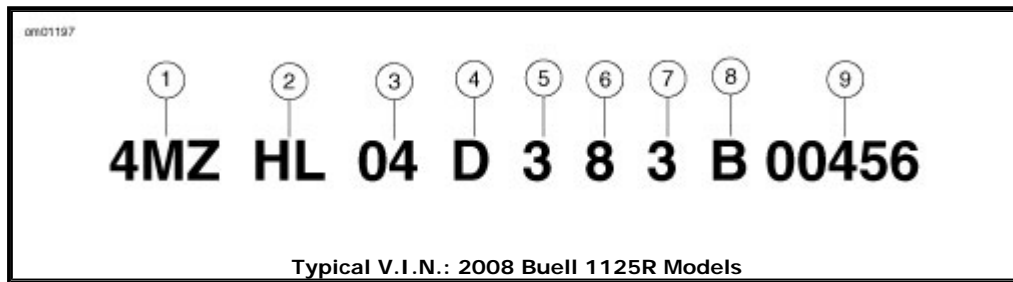
Vehicle Identification Number: Buell 1125R Models

[Top of page](#)

See [Typical V.I.N.: 2008 Buell 1125R Models](#) and [Buell V.I.N. Breakdown: 2008 Models](#). The full serial number or Vehicle Identification Number (V.I.N.) is stamped on the right front of the frame near the steering head. A Motor Identification Number is stamped at the base of the rear cylinder on the right side of the vehicle.

NOTE:

Always give the full Vehicle Identification Number when ordering parts or making any inquiry about your motorcycle.



Typical V.I.N.: 2008 Buell 1125R Models

Buell V.I.N. Breakdown: 2008 Models

POSITION	DESCRIPTION	POSSIBLE VALUES
1	Market designation (WMI code)	4MZ = Buell vehicles originally manufactured for sale within the United States 5MZ = Buell vehicles originally manufactured for sale outside the United States
2	Motorcycle type code	AX=Firebolt® DX=Ulysses™ HL=1125R™ JX=Lightning® Long KP=Blast® KX=Lightning® CityX SX=Lightning® WX=Lightning® Scg

		XX=Lightning® Super TT
3	Engine type	01=492 cc 02=984 cc Thunderstorm® 03=1203 cc Thunderstorm® 04=1125 cc Helicon™ 06=1125 cc Helicon™ (105 HP, France)
4	Market configuration	A=Australia B=Brazil L=California N=Canada D=Domestic E=England R=Europe J=Japan
5	V.I.N. check digit	Can be 0-9 or X
6	Model year	8=2008
7	Assembly plant	3=East Troy, WI U.S.A.
8	Model	0=Blast 2=XB9SX 3=XB12R 4=XB12S 5=XB12Scg 6=XB12Ss 7=XB12X 8=XB12STT B=1125R D=1125R, 105 HP France
9	Sequential number (last five digits)	Varies

Labels: Buell Models

[Top of page](#)

See **Labels: Buell 1125R Models** for safety and maintenance labels which were on the vehicle when new. If removed, replacement labels may be purchased for your motorcycle. Refer to **Labels: Buell 1125R Models** for label descriptions.

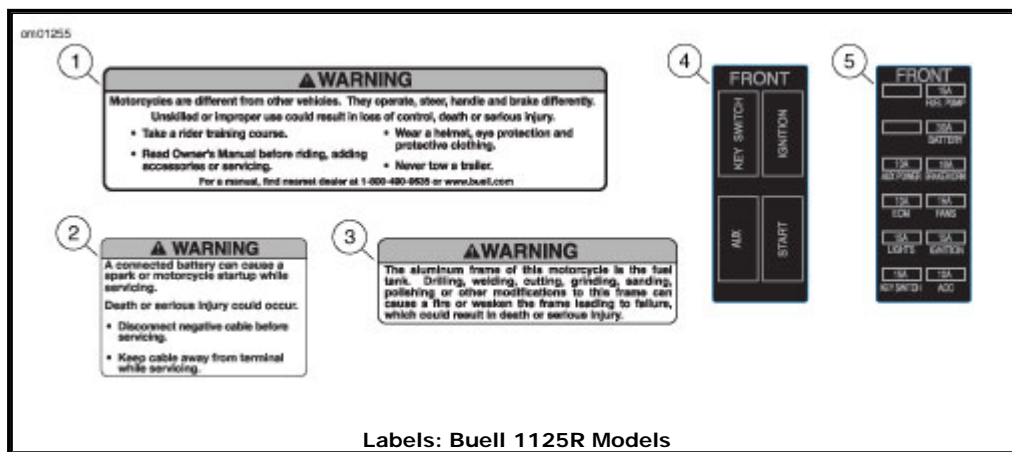
NOTE:

Some labels may be available in different languages for destinations outside the U.S.

Labels: Buell 1125R Models

LABEL	PART NUMBER	DESCRIPTION	LOCATION
1	C0178.5AA (label set)*	General warning label	Left side of swingarm.
2		Battery warning label	Front of trunk pan under pillion.
3		Frame modification warning label	Right side of frame above V.I.N. label.
4		Relay label	On relay block cover.
5		Fuse block label	On fuse block cover.

*C0178.5AA is a sheet that includes labels 1-5 above.



©2001-2011 Buell. All rights reserved.